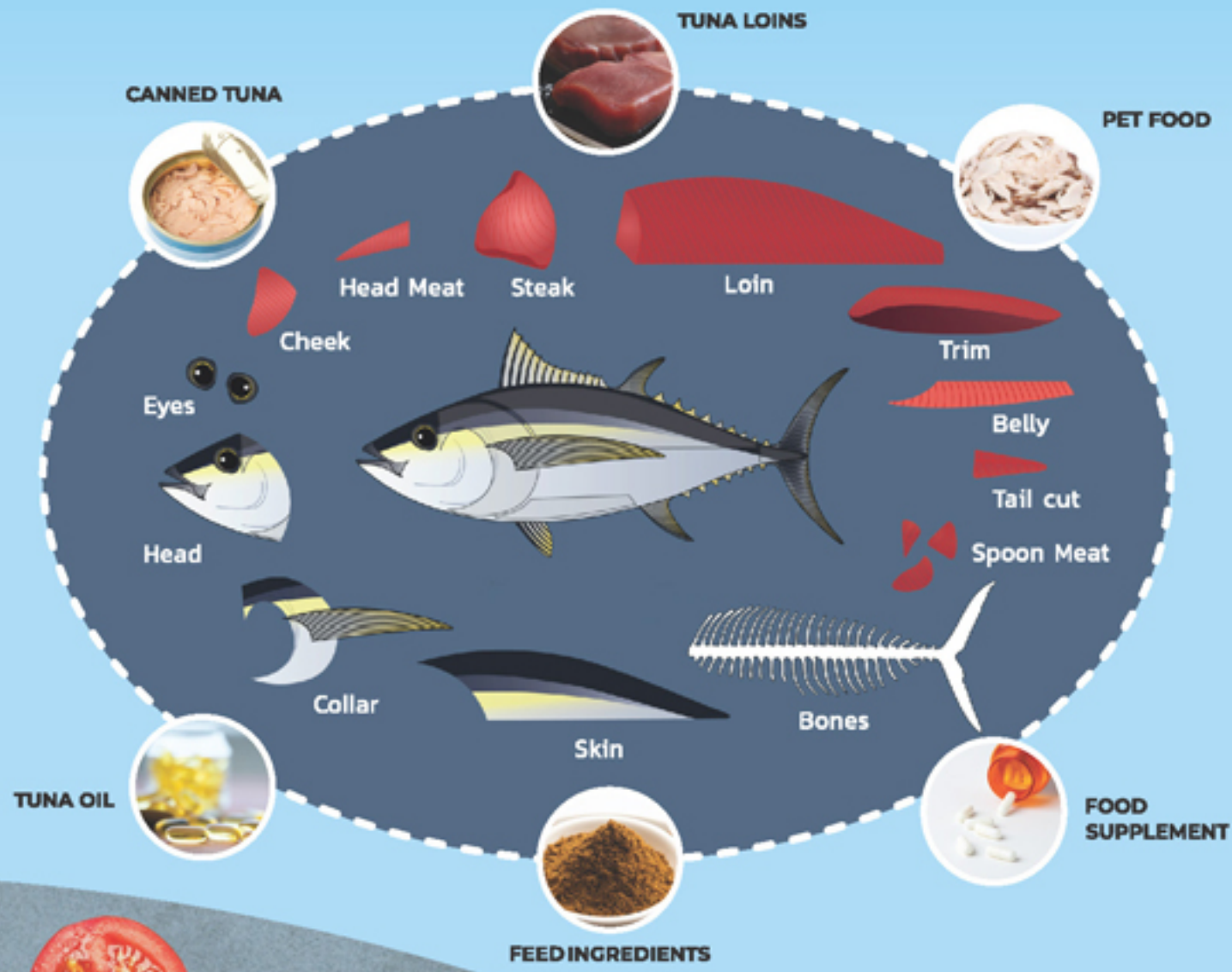


# ZERO WASTE



## REDEFINE YOUR DINING EXPERIENCE

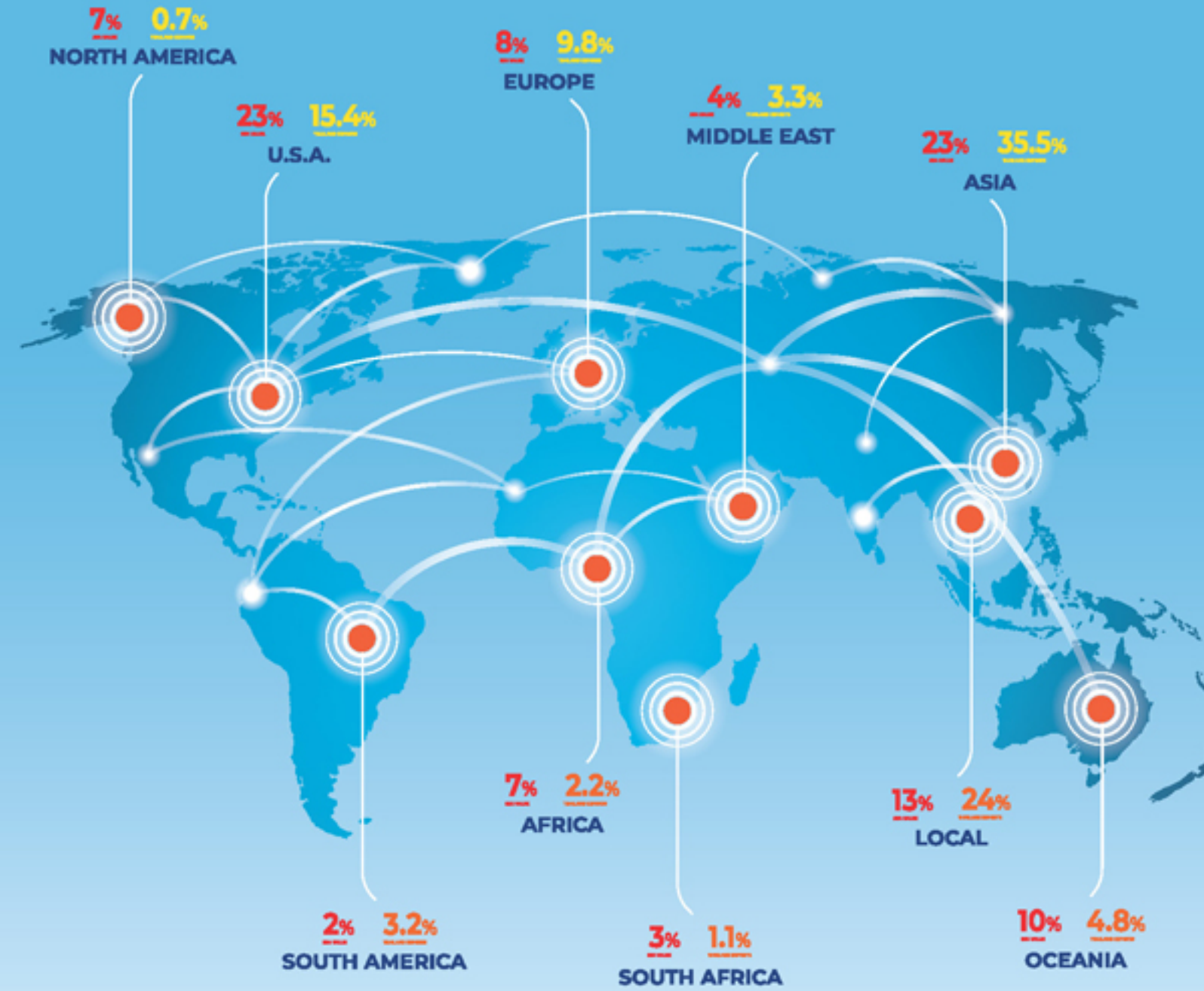
We gain the benefit of over 40 years of experience in the food business. With this great pride in our experience and flexible production facilities, we are moving forward to support a healthy lifestyle that is becoming a trend globally especially among the millennial generation by developed and launched more delicious food production lines, "Value Added" and "Ready To Eat meals" with high protein and nutrient.



"We are ready to bring customer worldwide the convenience and high quality food of worthy products."



# GLOBAL MARKET SALES



## CERTIFICATE

### ISO/IEC 17025 HACCP GMP HALAL



#### Sea Value PCL.

39/3 Moo 8 Setthakij 1 Road. Tha Sai, Mueang Samut Sakhon, Samut Sakhon 74000 THAILAND

#### CONTACT

Email : info@seavaluegroup.com  
Website : www.seavaluegroup.com  
Tel : 66 (0) 3442 4437 - 42

# SeaValue

## THE WORLD'S LEADING TUNA MANUFACTURER.



## MEET AND EXCEED CONSUMER EXPECTATIONS

SEA VALUE SELECTS THE HIGHEST QUALITY INGREDIENTS AND USES THE LATEST INNOVATIVE FOOD PROCESSING TECHNOLOGIES TO ENSURE SAFE AND PREMIUM QUALITY PRODUCTS FOR OUR CONSUMERS WHILE CONSERVING PRECIOUS NATURAL RESOURCES FOR FUTURE GENERATIONS. ALL OUR PRODUCTS AND PROCESSES CONFORM TO STRICT INTERNATIONAL STANDARDS AND REGULATIONS THROUGHOUT THE WORLD. WITH FAST-PACED LIFESTYLE CONSUMERS CONSTANTLY SEEKING HEALTHY AND CONVENIENT FOODS, OUR READY TO EAT NUTRITIOUS PRODUCTS AND INNOVATIVE PACKAGING MEETS AND EXCEEDS THEIR NEEDS AND EXPECTATION.

Unicord PLC. - I.S.A. Value Co., Ltd. - Sea Value Atlantic

# SeaValue

Sea Value PLC. was founded in March 2004 as a holding company for two leading tuna processors, I.S.A Value Co., Ltd. and Unicord PLC.

By combining the accumulated experience of the partner, Sea Value PLC. produces guaranteed excellent quality tuna using the most advanced manufacturing technologies in all our processing facilities. From the sea to the can, we seek high-quality raw materials and pay special attention to every single step to produce superior products to serve the world's market.

Exceeds customer expectations and satisfaction with a wide range of our successful products, Sea Value PLC. has delivered outstanding value to our customers and consumers all over the world.



## FACTORY

I.S.A Value Co., Ltd. has built its expertise in canned tuna through the years. Today, it produces a wide range of high quality tuna daily with strict quality control guidelines filled throughout production.

Since its establishment in 1980, Unicord PLC. has dedicated itself to product development. Unicord's canned tuna, pouch tuna, and frozen products are well accepted throughout the world under more than 350 brand names.

Today, Sea Value PLC. Operates 3 processing facilities in Samut Sakhon and Nakhon Pathom with total capacity of over 1,000 metric tonnes/day.

## CAPACITY

Today, Sea Value PLC. operates 6 processing facilities in Thailand and 1 factory in France with total capacity of over 1,000 metric tonnes/day.

### Unicord Public PLC. (Samut Sakhon)

- Plant 1: Established in 1980 area of 168,632 sq. m
  - Plant 2: Established in 2008 area of 67,592 sq. m
  - Plant 3: Established in 2019 area of 12,000 sq. m
  - Plant 4: Established in 2019 area of 10,000 sq. m
  - Plant 5: Established in 2019 area of 22,400 sq. m
- Production capacity for Human and Pet Food Over 1,000 metric tonnes/day

### I.S.A Value Co., Ltd. (Nakhon Pathom)

Established in 1989 area of 21,975 sq. m. production capacity for tuna 250 metric tonnes/day

### Sea Value Atlantic S.A.S. (Plant Lignol, France)

Established in 2012 area of 8,000 sq. m. production capacity for tuna 20 metric tonnes/day



## PRODUCT

Our human food products range from canned tuna, sardine, mackerel, pilchard, and pouch tuna with a wide selection of packing media and styles. With a growing demand for specialized tuna products, we also offer frozen loin, value added, and ready to eat products to fulfill the market's needs.

## HUMAN FOOD



## VALUE ADDED



## SUSTAINABLE

Sea Value PLC. contributes and gives support in working towards more innovative and sustainable fishing method. The company is one of the founding members of the International Seafood Sustainability Foundation (ISSF), whose "scientific fact-finding" approach is being fully supported by major brands and retailers around the world. The goal is to bring fish populations up to biologically safe levels to ensure continuing viability of fisheries, aquaculture, and the fish processing industries.

Sea Value PLC. also works very hard with our suppliers to ensure that the fish we put into each can is free from any illegal, unregulated, and unreported fishing practice.



## PET FOOD

Our premium pet food lines are made with high quality ingredients and various food supplements to assure pet nutritional health.



### Value Happiness

- Real Meat in Jelly
- Chunky in Loaf
- Gravy Chunky
- Home Style Soup
- Plate Craft
- Mousse



## SUPPLY CHAIN

One of our key strengths is the ability to form strategic partnerships with world's leading tuna suppliers. This can guarantee availability of raw material throughout the year to ensure that our factories will never be short of fish. Sea Value PLC. is also a majority shareholder of Borneo logistics Co., Ltd., who offers "full logistics and transportation services" that are tailor made "to meet with customers' requirements". From our factories to target destinations around the globe, we provide one stop logistics service in order to achieve the best timely delivery for our customers.



## EXPERIENCE

With more than thirty years of experience, Sea Value PLC. has been renowned in the industry for decades and proven itself to be one of the world's leading manufacturers of canned tuna. The key to success is our flexibility and ability to adapt to every specific need for all customers. Our well trained operational staffs together with dedicated R&D experts possess strong knowledge, background, and expertise in the canned tuna business with the ultimate goal of constantly improving the operation for all our processing facilities. This is to guarantee top quality products to consumers as well as ensure that we are in a position to serve any changes in consumer's needs.

